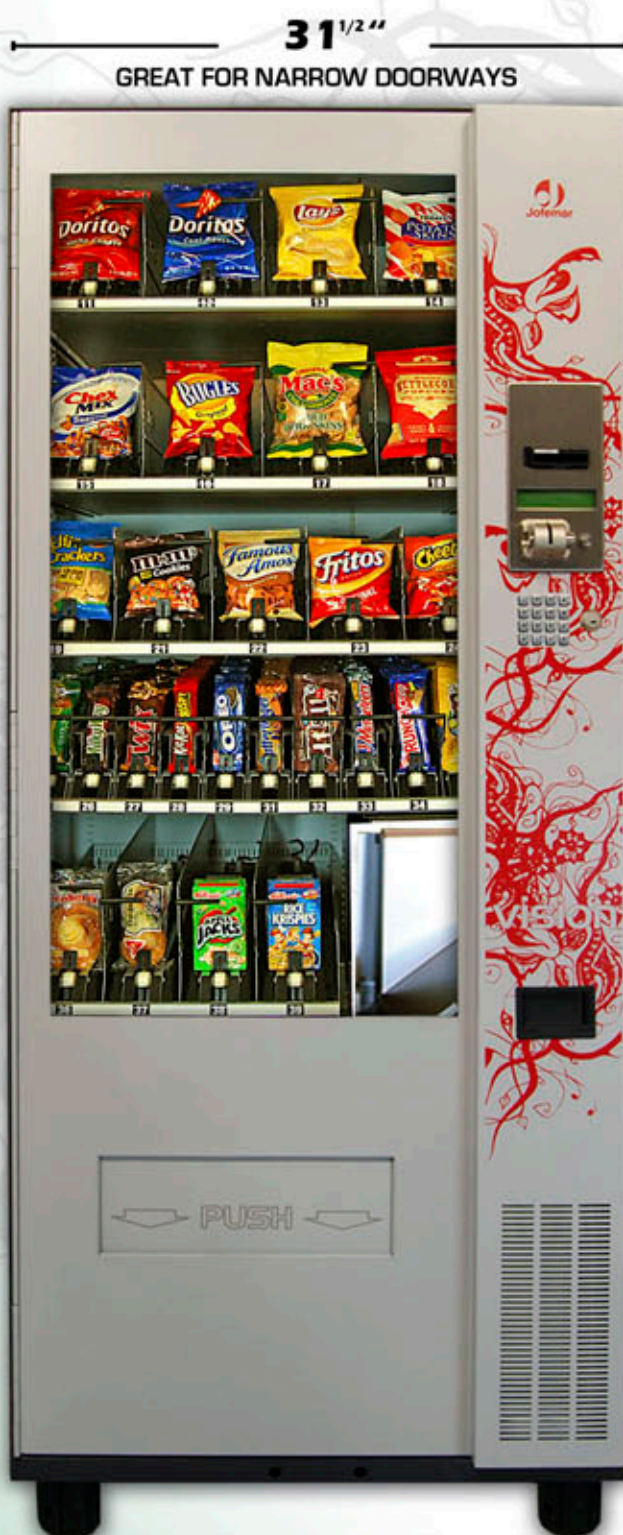


# SNACK PLUS II

THE MOST VERSATILE SNACK, CANDY & MORE VENDOR IN THE MARKET

VENDS SNACK, CANDY, PASTRIS & MUCH MORE...



THE NEW ERA IN VENDING IS ALREADY HERE...



www.jofemarus.com

# SNACK PLUS II

THE MOST VERSATILE SNACK, CANDY & MORE VENDOR IN THE MARKET

VENDS SNACK, CANDY, PASTRIS & MUCH MORE...

31 1/2" GREAT FOR NARROW DOORWAYS



- CONVEYOR DELIVERY
- PROGRAMMABLE SPEED & TORQUE
- ELIMINATES SPIRALS
- EASY TO LOAD
- 10 YEARS MOTOR WARRANTY
- EASY ADJUSTABLE FOR DIFFERENT PRODUCT SHAPES
- INCREASE UP TO 30% THE CAPACITY PER CHANNEL



### MACHINE FEATURES

- Energy saving feature which turns off display lights during non-operational periods.
- Programmable health and safety controls, as well as expiration date per selection
- Continuous self testing & diagnosis Failure incident report.
- Modular cabinet built with corrosion resistant & rust proofing treatment.
- Complete accounting data storage and retrieval via DEX/UCS port is RS232 C plug.
- LCD display of programming messages, product price and machine status.
- Greater capacity per selection for most items.
- First in first out (FIFO) delivery dispensing.
- Jofemar's Smart Vend guaranteed product delivery system.
- Injected foam cabinet assures the best refrigeration using lower power consumption.h
- Front security lock with 3 locking points
- Unique Jofemar's conveyor delivery system. Eliminates the spirals & increase capacity.

### SPECIFICATIONS

DIMENSIONS	72" H x 31" W x 37" D
WEIGHT	590 lbs.
GLASS SIZE	43" H x 21" W
ELECTRICAL	110 - 115 VAC / 2 amps
REFRIGERATION	Optional
TEMPERATURE	Ambient
MDB COMMUNICATION PROTOCOL	



PRODUCT SENSOR DETECTION GUARANTEES THE PRODUCT VEND



TOTAL = 70 PRODUCTS



DURABLE STAINLESS STEEL KEYPAD



2200 NW 102 Av. Unit #3 Doral, FL 33172, USA.  
PHONE 1 305 468 0302 - FAX 1 305 468 0310  
www.jofemarus.com - info@jofemarus.com

